

# Central Lancashire Local Plan



## Central Lancashire Issues & Options Consultation

**Issues & Options Consultation**  
Summary - November 2019



.....

This information can be made available on large print, braille, audio tape, translated into your language or into sign language. To use these services, please telephone 01257 515151. (English)

Informacje te można udostępnić na dużym druku, w alfabecie Braille'a, na taśmie audio, przetłumaczone na Twój język lub język migowy. Aby skorzystać z tych usług, zadzwoń pod numer 01257 515151. (Polish)

Aceste informații pot fi puse la dispoziție pe tipărire mare, braille, bandă audio, traduse în limba dvs. sau în limba semnelor. Pentru a utiliza aceste servicii, vă rugăm să telefonați la 01257 515151. (Romanian)

Ces informations peuvent être mises à disposition en gros caractères, en braille, sur bande audio, traduites dans votre langue ou en langue des signes. Pour utiliser ces services, veuillez téléphoner au 01257 515151. (French)

यह जानकारी बड़े प्रिंट, ब्रेल, ऑडियो टेप पर उपलब्ध कराई जा सकती है, जिसका आपकी भाषा में या साइन लैंग्वेज में अनुवाद किया जा सकता है। इन सेवाओं का उपयोग करने के लिए, कृपया 01257 515151 पर टेलीफोन करें। (Hindi)

ਇਹ ਜਾਣਕਾਰੀ ਤੁਹਾਡੀ ਭਾਸ਼ਾ ਵਿਚ ਜਾਂ ਮੈਨਤ ਭਾਸ਼ਾ ਵਿਚ ਅਨੁਵਾਦ ਕੀਤੇ ਵੱਡੇ ਪ੍ਰਿੰਟ, ਬ੍ਰੇਲ, ਆਡੀਓ ਟੇਪ 'ਤੇ ਉਪਲਬਧ ਹੋ ਸਕਦੀ ਹੈ। ਇਹਨਾਂ ਸੇਵਾਵਾਂ ਦੀ ਵਰਤੋਂ ਕਰਨ ਲਈ, ਕਿਰਪਾ ਕਰਕੇ 01257 515151 ਤੇ ਟੈਲੀਫੋਨ ਕਰੋ। (Punjabi)

આ માહિતી મોટી છાપવા, બ્રેઇલ, audioડિઓ ટેપ પર ઉપલબ્ધ કરી શકાય છે. તમારી ભાષામાં અથવા સાઇન લેંગ્વેજમાં અનુવાદિત છે. આ સેવાઓનો ઉપયોગ કરવા માટે, કૃપા કરીને 01257 515151 પર ટેલિફોન કરો. (Gujarati)

يمكن توفير هذه المعلومات على مطبوعات كبيرة أو برايل أو شريط صوتي أو ترجمتها إلى لغتك أو إلى لغة الإشارة. لاستخدام هذه الخدمات، يرجى الاتصال على 01257 515151. (Arabic)

یہ معلومات آپ کی زبان میں یا سائن زبان میں ترجمہ شدہ بڑے پرنٹ، بریل، آڈیو ٹیپ پر دستیاب ہو سکتی ہے۔ ان خدمات کو استعمال کرنے کے لئے، براہ کرم 01257 515151 پر ٹیلیفون کریں۔ (Urdu)

这些信息可以在大字体，盲文，录音带上翻译，翻译成您的语言或手语。要使用这些服务，请致电01257 515151。(Mandarin Chinese)



page

4

Introduction

page

6

Vision & Objectives

page

8

Delivering Homes

page

12

Economic Growth,  
Employment, Education  
and Skills

page

18

Transport and How we Travel

page

22

Improving Health  
& Well-being

page

28

Climate Change and  
Resource Management

page

34

Locations for  
Future Developments

# Contents



# Introduction

---



# Introduction

We need your help to make sure we have a plan for Central Lancashire that creates good quality places to live, work and relax over the next 15 years. People need good quality homes as these can improve the health of communities. We need you to tell us how we can improve our area for future generations and reduce the impacts of climate change by being carbon neutral by 2030.

We want to find out how you think people's quality of life can be improved. How do we encourage people to use their car less and make walking and cycling everyday choices? Without your ideas we cannot create a plan that meets the needs of local people and businesses.

## How to respond

**Online:** <https://centrallocalplan.lancashire.gov.uk/>

**Email:** [centrallancashireplan@chorley.gov.uk](mailto:centrallancashireplan@chorley.gov.uk)

**Write:** Issues & Options Consultation, Central Lancashire Local Plan Team, Civic Offices, Union Street, Chorley PR7 1AL

**You can submit your response until 23.59 hours on Friday 14th February 2020.**

This document is a summary version of the main Central Lancashire Issues & Options paper, which is also available for consultation.

This document does not contain all the questions we are asking as part of this consultation, only the key questions.





# Vision & Objectives

---



# Vision & Objectives

We need to develop a vision for the Local Plan which sets out how we want to see the area grow and evolve over the next 15 years. This will be different for everyone, but common themes will be shared by all. We need a vision which reflects that changes will happen, and we want to manage that to achieve the best outcome for Central Lancashire.

The following represents the key themes from the vision and objections, to view these in full please see the main consultation paper.

## Our vision for Central Lancashire

- Sustainable, adapting to the impacts of climate change
- Attractive to new and existing investors and visitors
- Improve skills and education
- Sustainable infrastructure and transport network
- Energy efficient schemes of high quality design
- Vibrant and accessible local centres, strengthening local distinctiveness
- Commitment to community wealth building
- Healthy, highly skilled and diverse communities
- Easy access to public services
- Access to good jobs
- High quality, affordable housing





# Delivering Homes

---



# Delivering Homes

Providing new homes is an important issue for us all. The type and quality of homes that are available can have a direct impact on the local community and the health of our residents.

Central Lancashire will offer homes that enable communities to thrive; where young people can stay in the community where they grew up, whether they want to rent or buy their own home.

Likewise, older people can stay at home for longer, as their homes are designed to be easily accessible and adaptable.

Affordable housing is a key priority, delivering new homes for social or affordable rent is essential to tackling inequality and improving the life chances of those who fall into homelessness, including young people and children.

**Q3: How can we make sure the homes we plan for meet the needs of everybody?**

**Q6: Where do you think new homes should be provided in Central Lancashire?**





# Delivering Homes

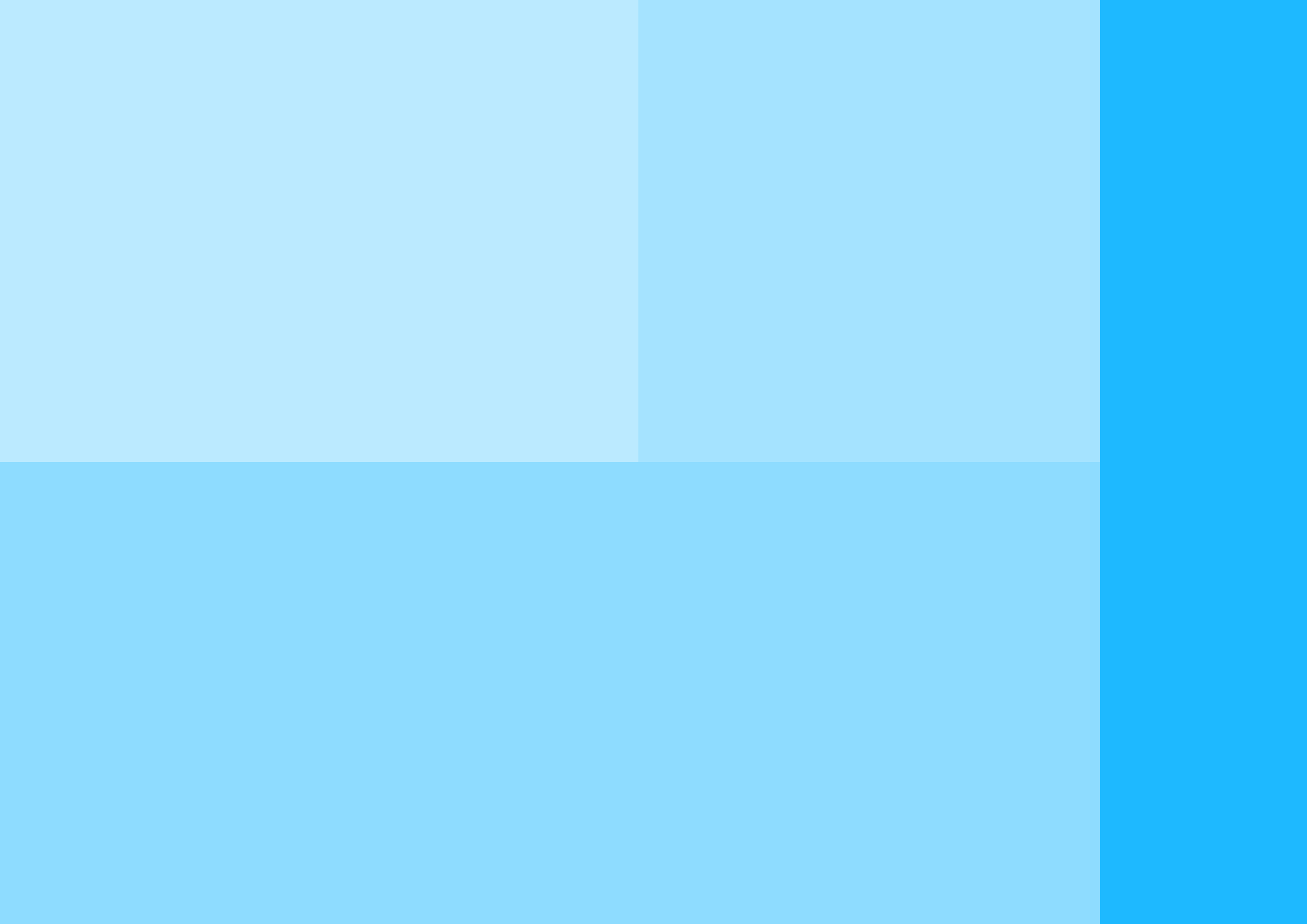
Students, older people and Gypsy and Travellers are some of the specific groups we must consider and plan housing for, as part of plan-making. We have produced a study into the requirements of Gypsy and Travellers, which identifies a need for sites in Preston and Chorley. In Preston, we have an unauthorised site at Rosemary Lane, one option could be to retain this site, which would mean very few new sites need to be found.

**Q10: Should the existing unauthorised Gypsy and Traveller site at Rosemary Lane in Preston be authorised for use by Gypsies and Travellers, or should a larger site be found somewhere else?**

**Q11: If a larger site should be found, where do you think it should be?**









# Economic Growth, Employment, Education & Skills

---



# Economic Growth, Employment, Education & Skills

Central Lancashire has a thriving economy and excellent higher education facilities, along with nationally important industries. Preston is the largest centre of population, work and town centre uses in Central Lancashire, and Preston city centre is the key driver of the Central Lancashire economy.

The Local Plan will assist in creating the conditions for our economy to continue to grow. It will do this by encouraging businesses of all types and sizes to establish, thrive and grow in Central Lancashire; and those businesses will invest in jobs, education, skills and development at sustainable locations. The Local Plan will include flexibility to help our high streets to evolve and adapt to challenging times.

## Q14: Where should the distribution and priority locations for economic growth be in Central Lancashire?

Despite Central Lancashire's strengths, some areas of the economy are underperforming and not reaching their full potential.

We need to attract younger people to live and work here. We also need more employment opportunities available (at the right qualification and skills level) that are attractive to our graduates.

## Q15: What kind of jobs would you like to see created in Central Lancashire?





# Economic Growth, Employment, Education & Skills

Lancashire County Council are responsible for the provision of schools in Lancashire and we are required to work with them to plan for the number of school places, both primary and secondary, in addition to other educational provision during this plan period.

Lancashire County Council have a methodology for forecasting the future need for school places and they will use this to ensure we are planning for the increase in school places arising from new development.

**Q16: Do you have any views about school provision in Central Lancashire?**





# Economic Growth, Employment, Education & Skills

City/town/local centres are at the heart of community life and play a key role in shaping people's perceptions of an area. Attractive, vibrant and prosperous centres can be the key to attracting growth and investment into the wider area. Equally, declining centres can have the opposite effect.

**Q18: How do you think we can make our town centres better?**





# Economic Growth, Employment, Education & Skills

We need to ensure our Local Plan safeguards and enhances the health, diversity and resilience of centres that also allow for growth in city centre living and city centre jobs. This will help to support the retail, services, cultural tourism and leisure functions of Preston city centre. Our local centres should include provision for local shops, amongst other uses, in order to maintain their key function and role in the retail hierarchy and to contribute to shorter, more sustainable journeys.

**Q24: Are there any improvements required for specific centres?**

- A. Preston**
- B. South Ribble**
- C. Chorley**
- D. Other district/local centre – please state which**





# Economic Growth, Employment, Education & Skills

The three councils see the Local Plan as forming the blueprint for the future of Central Lancashire, and in doing so the Local Plan needs to recognise what makes Central Lancashire the place it is, what is special and unique about where we live, work and visit. In doing so we can, hopefully, use this to drive our future plans and proposals.

**Q25(i): What do you feel defines Central Lancashire as a place?**  
**(ii): What is special and unique about Preston city centre and the towns within Central Lancashire that we can focus on to be the blueprint for future generations?**

Astley Hall, Chorley



Culture is comprised of a wide range of activities and initiatives, about our shared history and our values. It has a crucial role in revitalising and regenerating towns and cities. Central Lancashire has many cultural attractions, including the Harris Museum, Art Gallery & Library, the Worden Arts and Craft Centre and Astley Hall Museum & Art Gallery.

**Q26: How important do you feel leisure and culture opportunities are in helping to improve Preston city centre and the towns within Central Lancashire?**

**Q27: What cultural and leisure opportunities do you feel are missing in Central Lancashire?**



# Transport & How we Travel

---



# Transport & How we Travel

National planning policy provides a clear message that the transport system needs to be balanced in favour of sustainable options, which can have a positive impact on reducing the impacts of climate change.

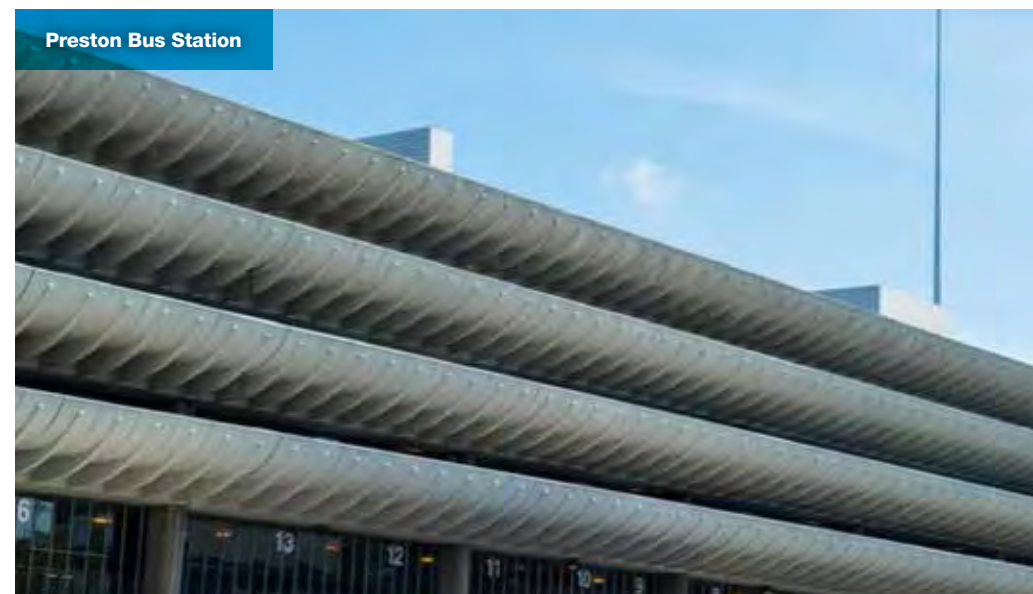
The location and design of development can shape how we travel, and this new Central Lancashire Local Plan provides a great opportunity to really make a difference to wider issues around congestion; air quality; climate change and poor health, whilst also allowing us to explore and make use of new technologies.

## Q28: How can we make travelling around Central Lancashire better and safer?

We will continue to work closely with Lancashire County Council and Highways England who are responsible for our roads in the preparation of the revised Local Transport Plan.

There is a need to increase the levels of cycling and walking to make them the natural choice for journeys, because it provides so many benefits both to our environment and to our health. In Lancashire, we have a target to double the number of people cycling by 2028 and to increase the number of people walking by 10% by 2028.

## Q29: How can the Local Plan encourage people to walk or cycle more?





# Transport & How we Travel

Restricting the numbers of vehicles on the road will reduce congestion and delay, as well as reducing carbon emissions and improve our air quality.

## Q30: How can the Local Plan reduce the number of cars on our roads?

Many people drive in to Preston city centre for work or education and to visit shops and entertainment venues. Many city centre residents need to park a car close to their home.

## Q33: Do you think the car parks available in Central Lancashire are fit for purpose and in the right locations?



Cyclist - Worden Park, Leyland



# Transport & How we Travel

It is important that people who need to drive into our town and city centres can do so, but it is also important that we reduce the number of trips made by car by encouraging more people to travel more often on foot, by bike or on public transport.

Public transport covers a range of different modes of travel and can have public and private sector involvement. However, services need improving particularly in rural areas, as well as where new development is proposed to be considered a realistic alternative to the car.

**Q34: How can we improve public transport and encourage more people to use it?**

Improvements to the provision of cycling facilities is key to increasing people cycling. We need cycle only lanes, safe storage for bikes as well as making sure that work places provide facilities for cyclists.

**Q37: In addition to cycleways, what cycle facilities does Central Lancashire need, and where should these be located?**





# Improving Health & Well-being

---



# Improving Health & Well-being

Central Lancashire faces challenges of a growing and an ageing population. However, life expectancy for some is declining which indicates health is worsening for them.

Another challenge for Central Lancashire is that people living in the poorest neighbourhoods live shorter lives than those who live in the richest ones. These differences are known as health inequalities. Some of those living in poorer areas also spend more of their lives living with a disability.

## **Q39: How can planning improve health and reduce health inequalities?**

Obesity is a major issue facing both the UK and our area. Childhood obesity affects children from the most deprived areas disproportionately. It can impact on mental health alongside serious and potentially life-threatening physical illnesses. The issue is particularly serious in South Ribble – it contains one of the highest densities of takeaway food outlets in the country. Evidence shows links between greater exposure to takeaway food outlets and the likelihood of being overweight and obese.

To tackle this issue Lancashire County Council's Public Health Team (LCCPHT) recommend restrictions are placed on new hot food takeaways. Preston applies a sequential test to hot food takeaway proposals and restricts their opening hours during the daytime where they are within 400 metres of a secondary school or sixth form college.

## **Q40 Do you support the principle of a policy that seeks to restrict new hot food takeaways?**

## **Q42: Would you support policies that require implementation of the ability for people to grow their own food – such as allotments, community food growing areas, orchards etc?**



# Improving Health & Well-being

LCCPHT also recommends that active design principles are incorporated into local planning policies. Active design is about designing and adapting where we live to encourage activity in our everyday lives. It aims to ensure that when environments and places are designed, they make physical activity the easiest and most practical option in everyday life. This will increase opportunities to lead active and healthy lifestyles.

**Q43: Should the Local Plan include a policy that encourages people to be more active in their everyday lives?**





# Improving Health & Well-being

Living conditions impact on health, and fuel poverty is an issue in central Preston which appears to be linked to older housing stock. Preston is also the only Central Lancashire district which has wards that lie within the worst 10% nationally for the quality of housing. Therefore, we need to think about how existing housing stock can be improved especially in deprived areas.

**Q44: How can the Local Plan improve our existing homes?**

Large inequalities exist in the area in relation to how healthy neighbourhoods are, based on accessibility to a range of services including retail outlets and health facilities, access to green space and a safe environment, as well as the levels of air pollution.

**Q45: What can the Local Plan do to promote healthy neighbourhoods?**





# Improving Health & Well-being

Employment and income have a considerable impact on a person's physical and mental health. Worse health and lower life expectancy are strongly associated with long-term unemployment and children who are raised in workless households are often highly disadvantaged. Even if people are employed if their income is low, they can still be in poverty and suffer the social exclusion and increased health risks this poses.

## **Q48: How can the Local Plan provide employment opportunities to all in society, to improve health and well-being?**

To benefit the health of the population, employment opportunities need to be provided for all. Ensuring that access to job opportunities is easy from areas of higher unemployment and lower income would also potentially benefit health.

Preston City Council is committed to the principles of community wealth building. This approach seeks to ensure the economic system builds wealth and prosperity for everyone in the City. One way in which this can be done is through the use of co-operatives. In simple terms a co-operative is an association or business, which is owned and run jointly by its members, who share in the profits and benefits. The Local Plan could lend support to the establishment of cooperatives in Central Lancashire. This could include worker and construction co-operatives, where individuals or families work together to directly construct their own homes in a co-operative fashion.

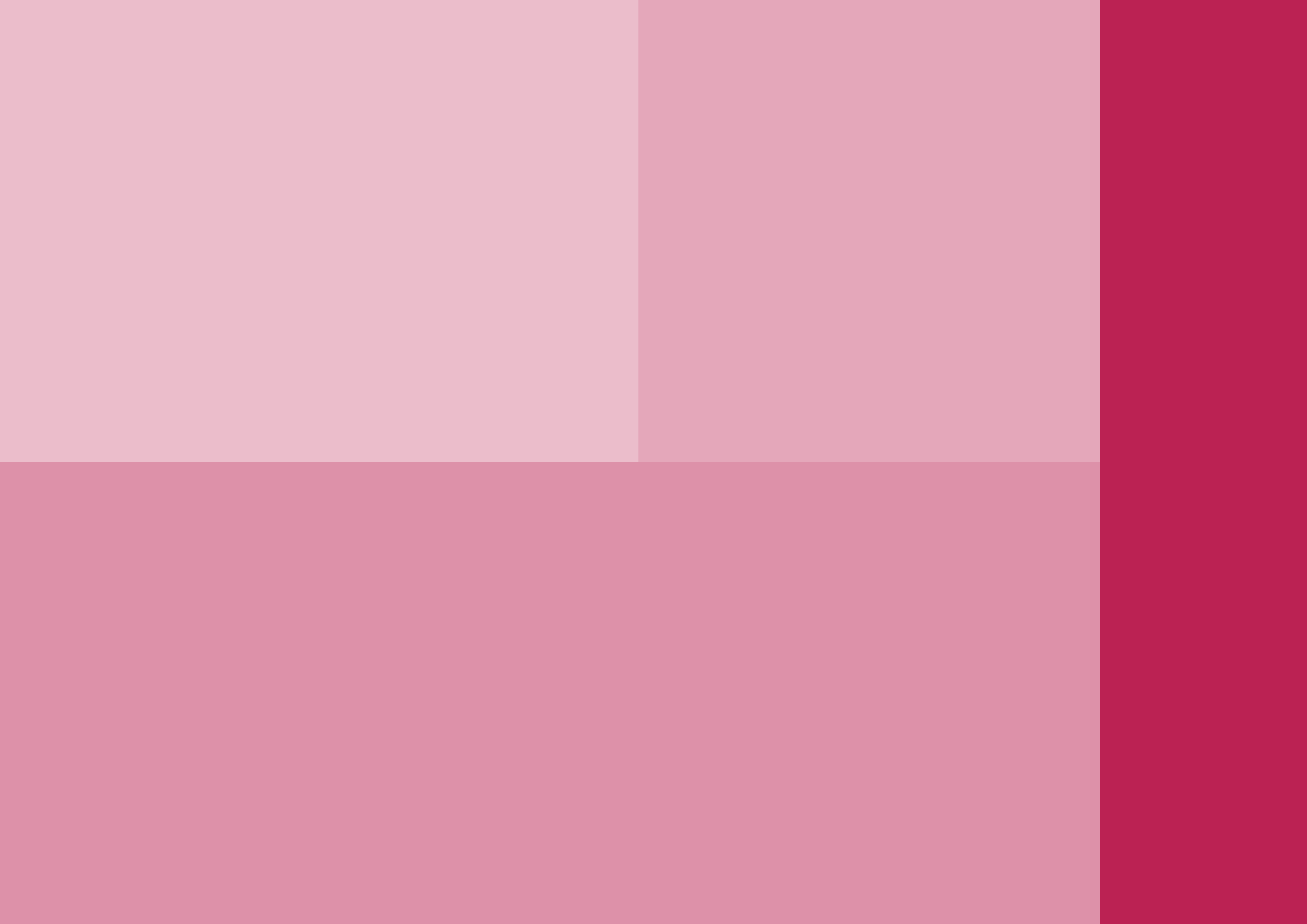
## **Q49: Do you think the support for co-operatives in Central Lancashire is a good thing?**

## **Q50: If so, how can the Local Plan support them so that they flourish?**

Longton Marsh









# Climate Change & Resource Management

---



# Climate Change & Resource Management

The government is committed to protecting and enhancing our natural, built and historic environment. This includes making effective use of land; helping to improve biodiversity; using natural resources prudently; minimising waste and pollution, and mitigating and adapting to climate change, including moving to a low carbon economy.

An effective and relatively simple method of tackling climate change is tree and woodland planting. Research indicates that planting new trees is overwhelmingly more powerful than all the other climate change solutions proposed. The new Local Plan can help in exploring options for more tree planting in various ways.

**Q51: How can the Local Plan help to increase tree and woodland planting?**

Our Local Plan must address the impacts of climate change. The Local Plan can have a positive impact on climate change through a variety of actions, such as how places are designed, making buildings more energy efficient, looking at new sources of energy, having sustainable transport and providing electric charging points.

**Q52: Is there anything else that the Local Plan can do to address Climate Change?**





# Climate Change & Resource Management

Air quality is a key issue for the Local Plan and one which the Government has identified in its Clean Air Strategy as being the largest environmental health risk in the UK. It is an important factor in preserving and improving health and well-being and a key issue for the development of the Local Plan.

The Local Plan can help influence where new developments come forward and introduce ways to help society make changes to reduce the levels of air pollution. Data already shows that over the summer months nitrogen dioxide levels are lower than over the winter months. This is due to traffic volumes in the summer being lower and also alternative means of travel (e.g. walking, cycling) are generally more attractive when the weather is better.

Air quality is a key issue for the Local Plan and one which the Government has identified in its Clean Air Strategy as being the largest environmental health risk in the UK. It is an important factor in preserving and improving health and well-being and a key issue for the development of the Local Plan.

The Local Plan can help influence where new developments come forward and introduce ways to help society make changes to reduce the levels of air pollution. Data already shows that over the summer months nitrogen dioxide levels are lower than over the winter months. This is due to traffic volumes in the summer being lower and also alternative means of travel (e.g. walking, cycling) are generally more attractive when the weather is better.

## Q56: How can the Local Plan help improve air quality?





# Climate Change & Resource Management

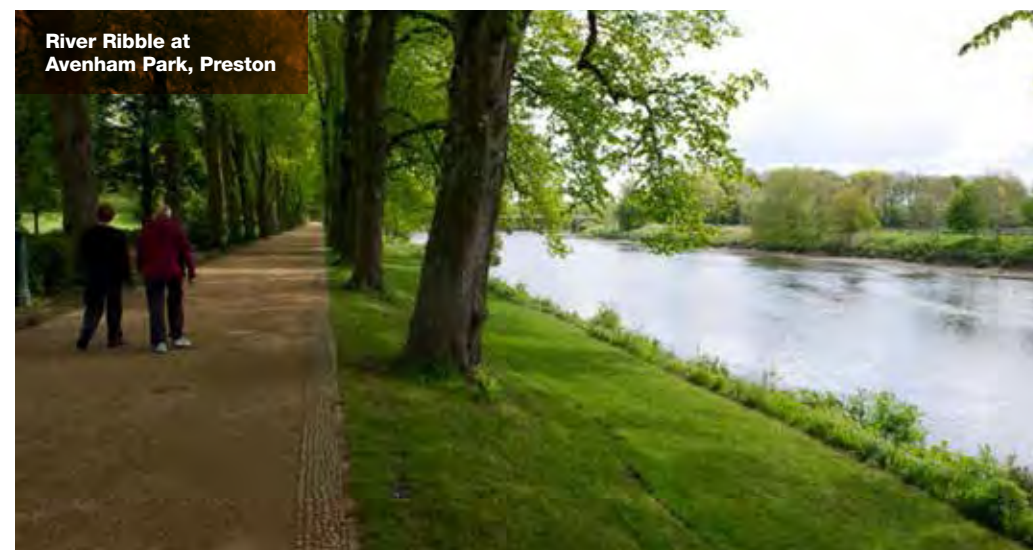
The area of Central Lancashire has international, national, regional and locally designated natural assets and is fortunate to have rich and varied landscapes and habitats. These include the Forest of Bowland, the River Ribble and Estuaries, 6 Sites of Special Scientific Interest, 5 Country Parks and 30 Local Nature Reserves (LNR). In addition, the area contains a large number of parks, some of which are designated as historic parks and gardens, as well as a number of children's play areas and over 50% of the area is covered by Green Belt.

There are also 3 main rivers and their tributaries as well as 2 canals, all of which shape the landscape of Central Lancashire. The Central Lancashire authorities are members of the Lancashire wide Local Nature Partnership which brings together organisations, business and people to improve their local natural environment.

These resources provide a number of benefits including contributing to better health and well-being of communities through providing opportunities for leisure and recreation. Open spaces help to support habitats and improve air quality as well as providing ways of adapting to the impacts of climate change.

The Local Plan has a role to create policies which will influence how development takes place across Central Lancashire whilst ensuring that we can still protect and enhance the natural environment and recognise the potential for improvements in biodiversity through all new developments.

**Q59: Are there any specific issues that the Local Plan needs to address regarding the environment?**





# Climate Change & Resource Management

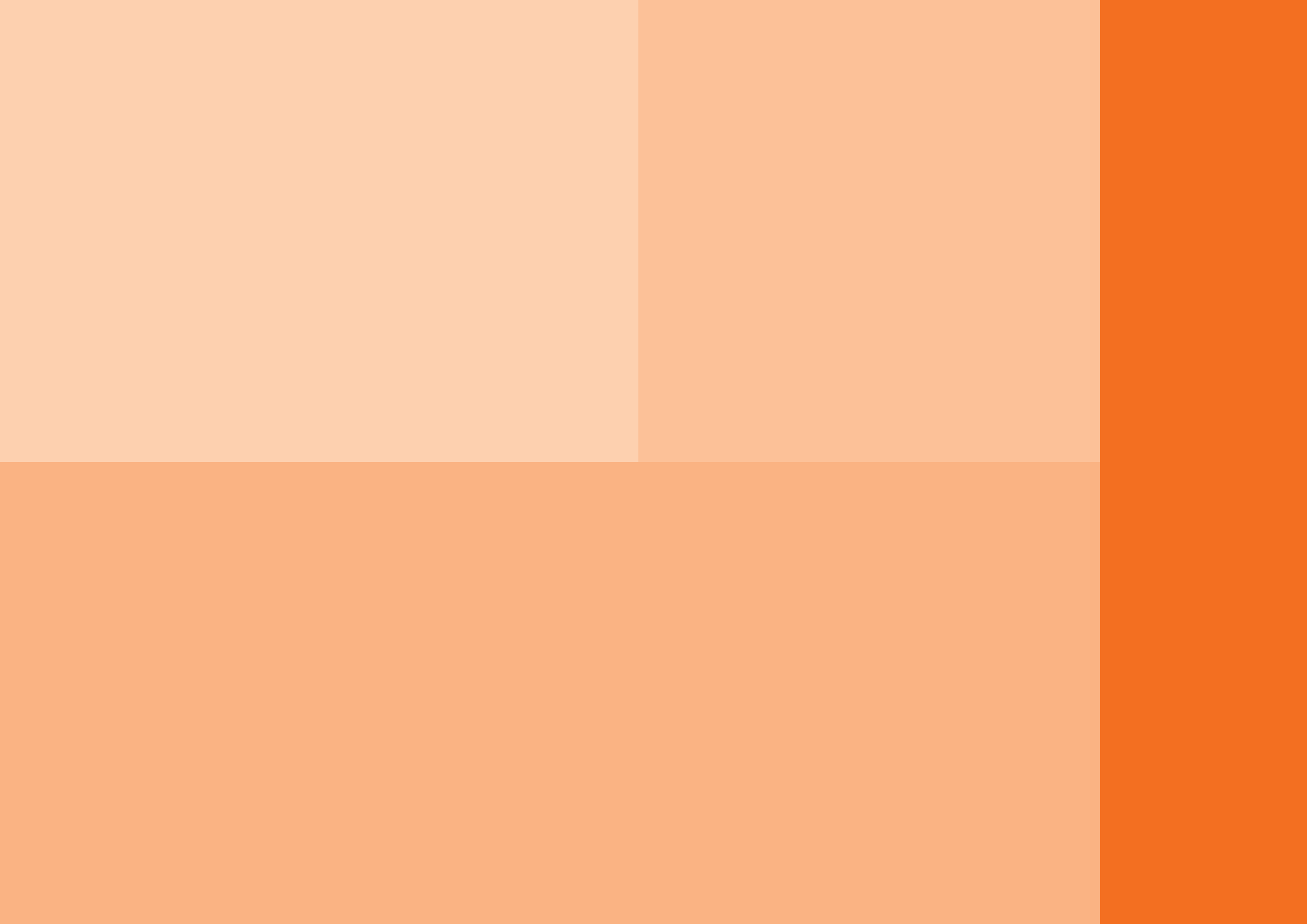
Central Lancashire has a rich and varied built environment, which includes landscapes, sites, structures and buried remains of significant historic and archaeological interest. Central Lancashire contains 1,397 Listed Buildings/ Structures as well as a number of locally listed buildings, 14 registered parks and gardens and 27 Conservation Areas. The Local Plan will need to continue to protect these.

The design of a new development and how this fits into the wider environment is therefore an important issue for planning. If historic buildings/heritage assets are to be altered or developed, any alterations must be sensitively designed in keeping with their significance.

**Q60: How can the Local Plan achieve high quality design in all developments?**









# Locations for Future Development

---



We are currently reviewing how much land we need for new homes, jobs and facilities, but for now we want your thoughts on where we should be considering development. Population is predicted to continue to grow across Central Lancashire and we need new homes for everybody. However, much of the land in Central Lancashire is subject to a variety of constraints, such as open space and Green Belt which affects where new development can go.

We need to decide which parts of Central Lancashire should be considered for development next and we want you to help us decide how we should do this.

The existing Core Strategy aims to provide the most development in bigger places and small amounts of development in smaller places like certain villages. It also seeks to protect the character of suburban and rural areas.

**Q61: Is the Core Strategy approach (set out in the paragraph above) providing the homes, jobs and facilities that are needed?**

**Q62: Where would you like to see the Local Plan focus new homes and jobs in the future?**





# Locations for Future Development

## CALL FOR SITES 3

We have undertaken two Call for Sites exercises to identify potential new areas for development. We have received almost 500 submissions for housing and employment and are currently in the process of assessing these.

We want to give all interested bodies, landowners, developers and the public another opportunity to submit sites to us. We are also asking are there any other sites we should be looking at which you would like to be considered. So, if you know of any other sites that could be developed please get in touch with us or submit details via the Central Lancashire Local Plan website.

We are asking for further sites to be submitted because government guidance requires us to have a sufficient supply of small and medium sized sites. We are also seeking to prioritise the development of suitable brownfield land sites in accordance with government guidance.

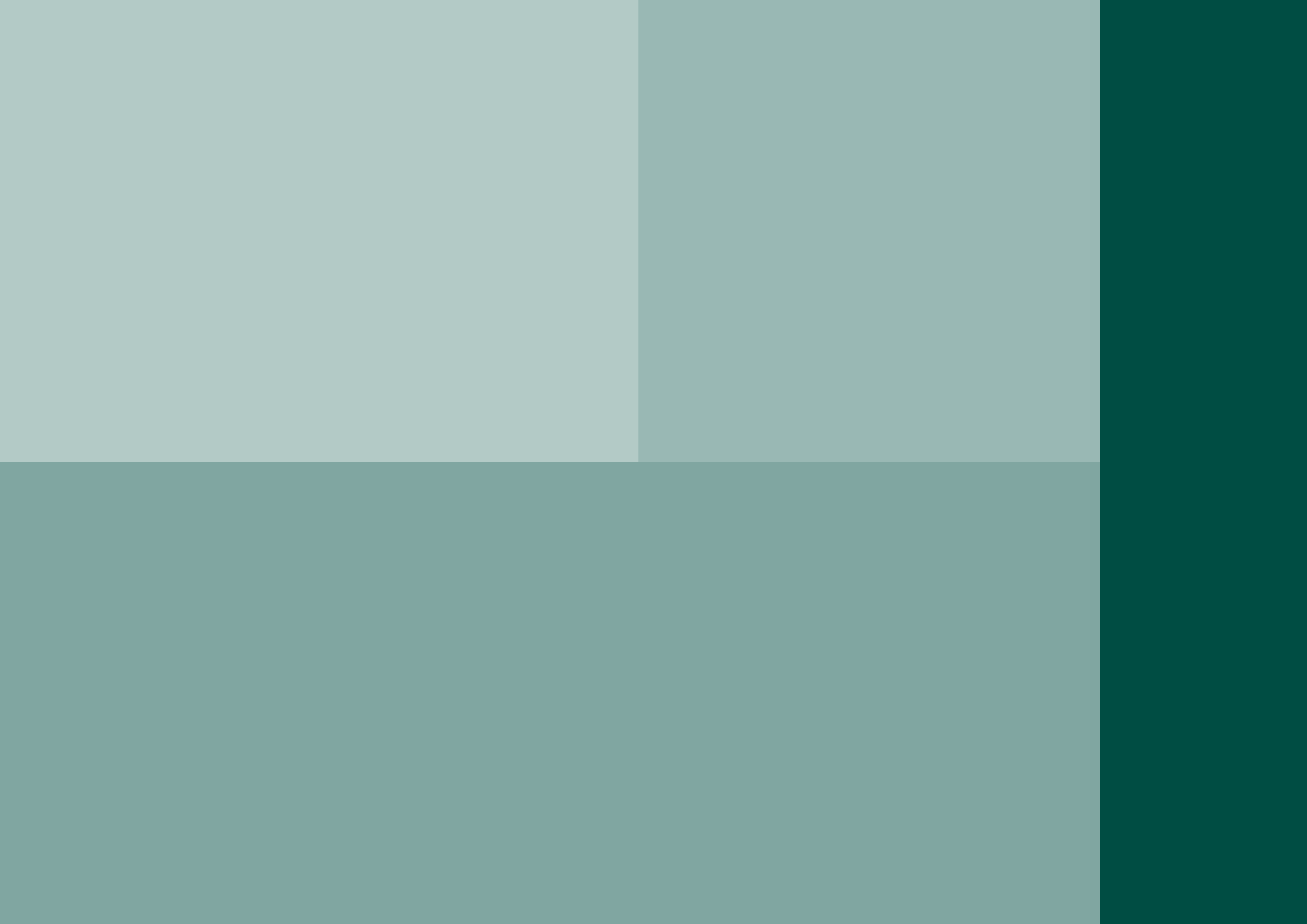
Call for Sites 3 will be the final opportunity to submit sites to us for consideration. Any new suggestions will be assessed and presented in the Preferred Options document, so you will be able to comment on these in the future.

We are keen to hear your views about the priorities for Central Lancashire. So please let us have your comments on how we can provide the homes, services and facilities that are needed over the next 15 years.

**Q68: Do you have any further comments that you wish to make?**









The graphic features three overlapping circles on a light green background. The left circle shows a lush green landscape with trees and a blue sky. The right circle shows a busy city street with pedestrians and buildings. The bottom circle shows a close-up of a brick building facade. In the center, a white circle contains the text.

# **Central Lancashire**

## Issues & Options Consultation